

# Printing With AssetWorx!

Version 3.1  
February 15, 2023  
© InfinID Technologies, Inc.

## TABLE OF CONTENTS

Printing Overview .....	3
Printing Software .....	4
Configuring the Print Server .....	4
Creating Print Templates .....	5
Printing in AssetWorx.....	6
Setting Up Bartender Templates .....	7
Print Variable Names .....	8
Basic Variable Names .....	8
Custom Variable Names .....	8

## **Printing Overview**

AssetWorx supports either printing directly through Bartender, or printing to a CSV file which can then be processed as the user desires. This document will go over the necessary steps for setting up the system to print in either way.

AssetWorx! is structured to support a distributed architecture. This means that many components can be running in different environments. For instance, you will only have one web server, but you could potentially have multiple print servers running.

## Printing Software

AssetWorx provides a dedicated Print Server software application. This application runs as a Windows Service. To provide immediate print handling, the AssetWorx Print Server can be configured to use the MQTT protocol or operate in batch mode with direct database transactions.

You can also use the Alarm Monitoring Service to handle your printing. The Alarm Monitoring Service uses periodic HTTP polling and is not as flexible as the AssetWorx Print Server. The Alarm Monitoring Service should only be used when using the Print Server is prohibited.

### *Configuring the Print Server to use MQTT*

The AssetWorx installer can help you install the Print Server. Before the Print Server can be installed though, you must create a Print Client. After logging into AssetWorx, click Tools->Options and then click on the MQTT tab. Make sure MQTT is enabled and then under Print Clients, click Add. Start with choosing a Username and Password. AssetWorx supports a multi-tenant architecture. You can add extra tenants as Companies within the system that have total data isolation. The AssetWorx Print Server allows you to configure a Print Client to support multiple Company tenants throughout the enterprise. Add the Companies you want to assign to the Print Client and click Save.

Add/Edit Print Client

Name

Main Print Server

Username

myprintclient

Password

NRC6E6PHmd7UxEVr2qbuXIJSIUUQR0OhGHtNlBHOvWvHXqfDJe

Generate Password

Available Companies:

Add

Assigned Companies:

My Company

Remove

Save



Cancel

## Creating Print Templates

Create a print template for each unique file print format that you wish to use. If Print Method is Bartender, File Path refers to the full file path of the Bartender file on the Print Server or Alarm Monitoring Service machine that will process the print job.

If printing will be done with the AssetWorx Print Server with MQTT, choose the Print Client under the Use with Print Client section. If printing will be done with the Alarm Monitoring Service or the Print Server in Batch Mode, enter the Machine Name of the computer that is running the Alarm Monitoring Service or Print Server.

### Edit Template

 Save  Cancel

**Name**

**Print Type**

**Print Method**

**File Path**

**Use With Alarm Monitoring Service**

**Use With Print Client**

# Printing in AssetWorx

Printing can be accomplished in AssetWorx! on either the Asset Paging, Location Paging, Edit Asset, or Edit Location screen. Batch Printing can be accomplished by simply selecting which items you wish to print and then clicking Batch Print under Custom Actions. The Print Jobs will then be created and processed by the appropriate Alarm Monitoring Service.

AssetWorx!

Screens ▾ Views ▾ Tools ▾ Reports ▾ Help ▾

Assets

+ Add

Edit

Delete

Custom Actions ▾

Type to search

<input type="checkbox"/>	Name	Active Tag	Location Name
<input checked="" type="checkbox"/>	A000000	000000	Room
<input checked="" type="checkbox"/>	A00108E	00108E	ng
<input type="checkbox"/>	A00404B	00404B	

Batch Print

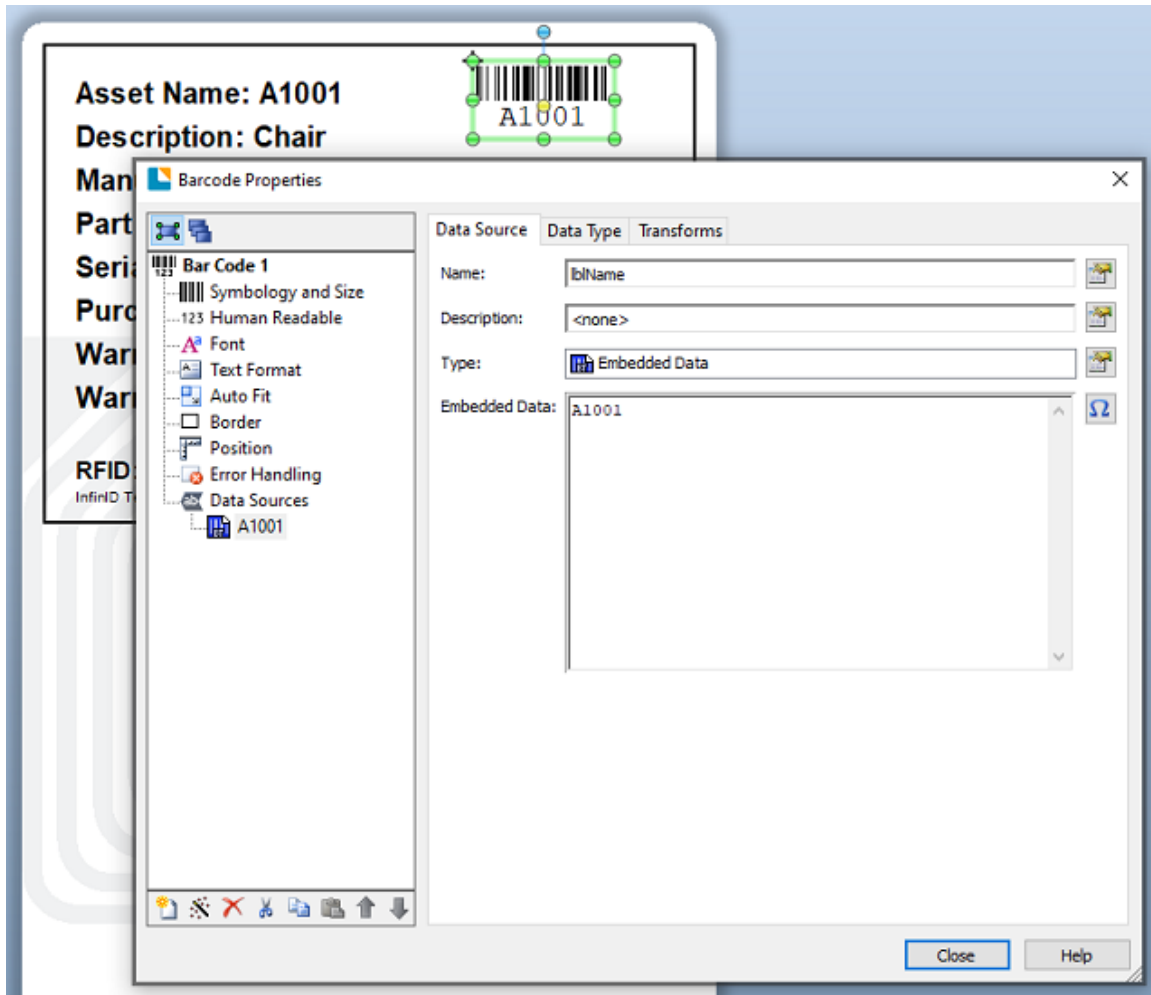
Batch Move

Import

Export

## Setting Up Bartender Templates

The AssetWorx installer package has a directory called “Print Templates” which includes some basic template formats as an example. These can be modified as desired. In printing directly to Bartender, AssetWorx will attempt to replace any Bartender Data Sources through their Name value. As an example below, lblName corresponds to the Asset Name field and printing to Bartender through AssetWorx will replace any objects in the template that have the Data Source name lblName with the corresponding AssetWorx object value.



## Print Variable Names

Below is a list of the various names that should be utilized in order to inject AssetWorx data into a Bartender template through the Data Source object values:

### Basic Asset Variable Names

Basic variable names are shared names whose values never change:

lblName  
lblDepartmentCode  
lblAssetType  
lblDescription  
lblRfidTag  
lblLocationName  
lblVTagID

### Custom Asset Variable Names

Custom variable names are shared names whose values can be changed to modify how the fields are displayed. Although their default values are listed below, changing the name of your Custom Field Names will change how they should be named in bartender. For instance, if the Text\_1 Custom Field Name is changed to Supplier, you would then have to use the Bartender shared name of “lblSupplier” instead of lblText1. Change Custom Field Names under the Tools menu:

lblText1  
lblText2  
lblText3  
lblText4  
lblText5  
lblText6  
lblText7  
lblText8  
lblText9  
lblText10  
lblText11  
lblText12  
lblText13  
lblText14  
lblDate1  
lblDate2  
lblDate3  
lblDate4  
lblDate5  
lblListValue1  
lblListValue2  
lblListValue3  
lblListValue4  
lblListValue5



## **Location Variable Names**

The variable names that can be used for printing location RFID tags can be found below.

lblName

lblSite

lblBuilding

lblFloor

lblRoom

lblRfidTag

## **Employee Variable Names**

The variable names that can be used for printing employee RFID tags can be found below.

lblFirstName

lblLastName

lblEmail

lblPhone

lblRfidTag